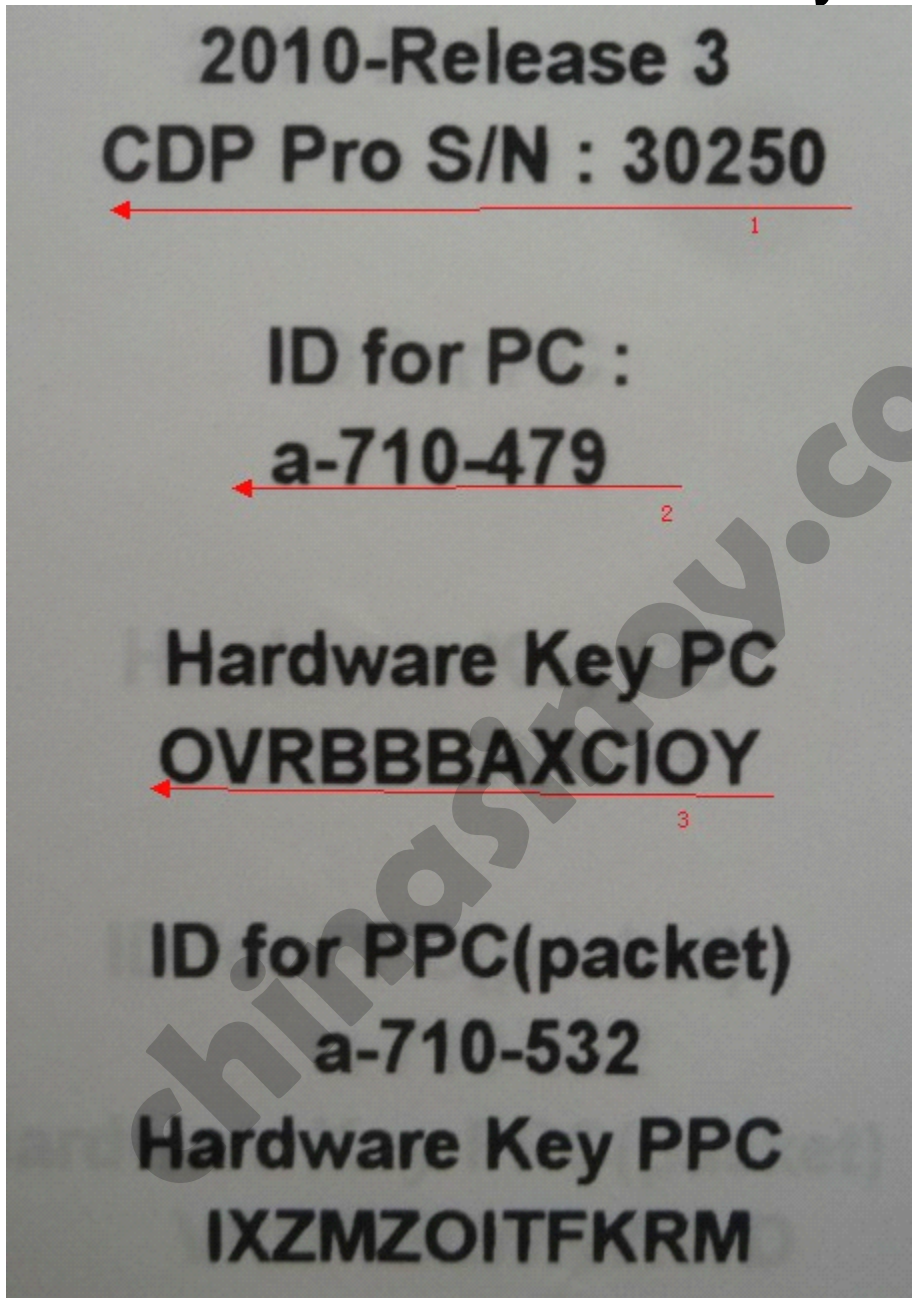


auto com cdp pro setup instruction

1, Show how to find Autocom cdp-pro Sn***
Pc-code*** hardware key***



2, system requirements and setup notes

2 System requirements

2.1 Minimum

- Intel® Pentium® II 400 MHz (or similar)
- Windows 7, Windows Vista®, Windows 2003 Server, Windows® XP(*) SP3
- 128-512 MB RAM (depending on operating system)
- 500 MB free hard disk space
- Screen with resolution 800 x 600
- DVD-unit
- Bluetooth (SPP) or USB
- Microsoft .NET Framework 3.5 or later (included in installation)
- Adobe Acrobat Reader 4.0 or later

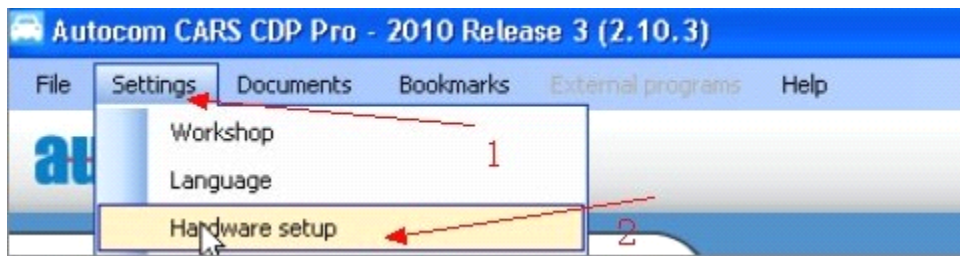
2.2 Recommended

- Intel® Pentium® 4 1.7 GHz or better (or similar)
- Windows 7, Windows Vista®, Windows® XP(*) SP3
- 1024-2048 MB RAM (depending on operating system)
- 500 MB free hard disk space
- Screen with resolution 1024 x 768 or better
- DVD-unit
- Bluetooth (SPP) or USB
- Microsoft .NET Framework 3.5 or later (included in installation)
- Adobe Acrobat Reader 4.0 or later

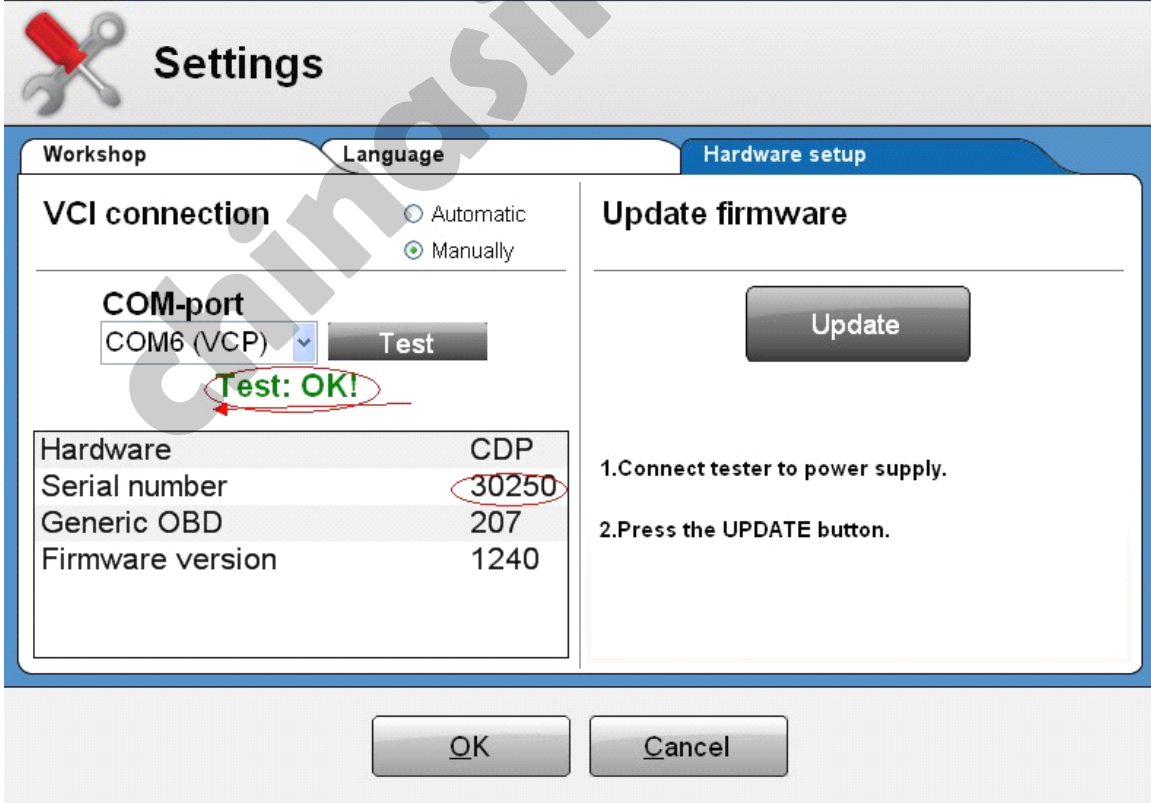
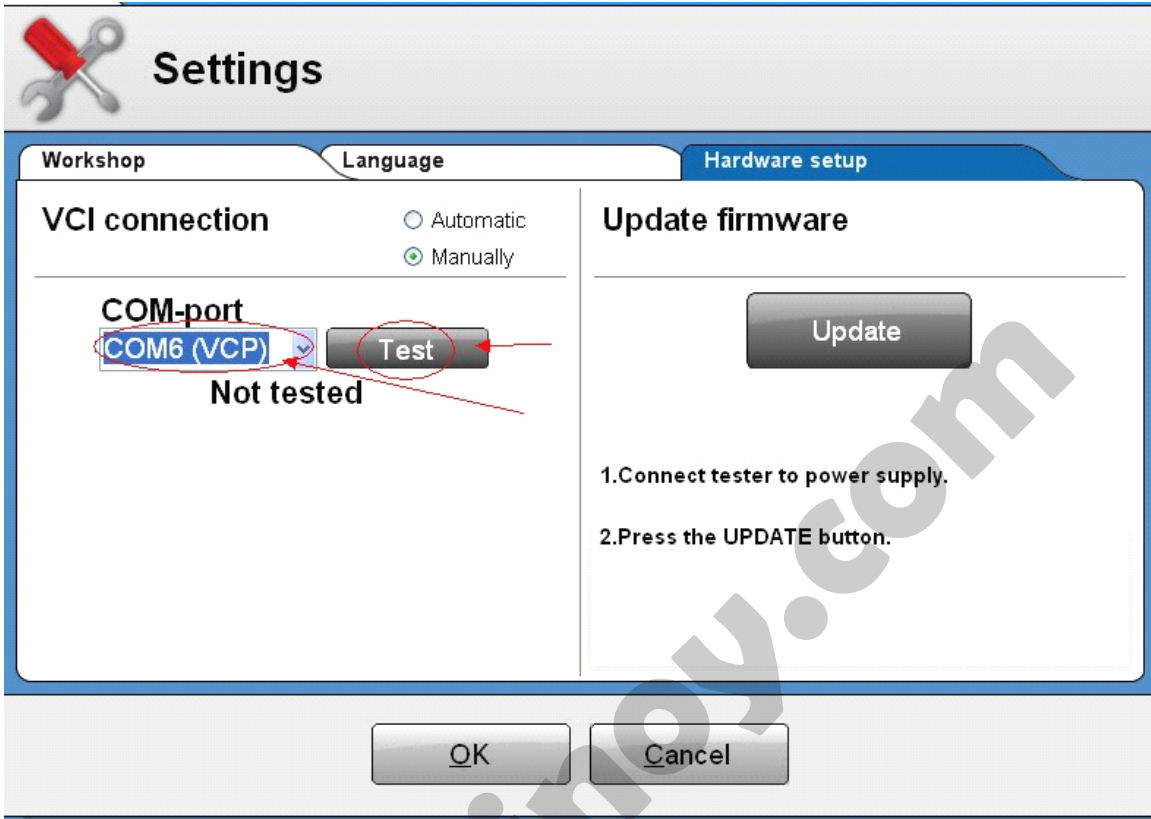
(*) Windows® XP Media Center Edition and its different version are not supported!

Note! Both 32-bit and 64-bit operating systems are supported, note that 64-bit OS require installation of USB drivers.

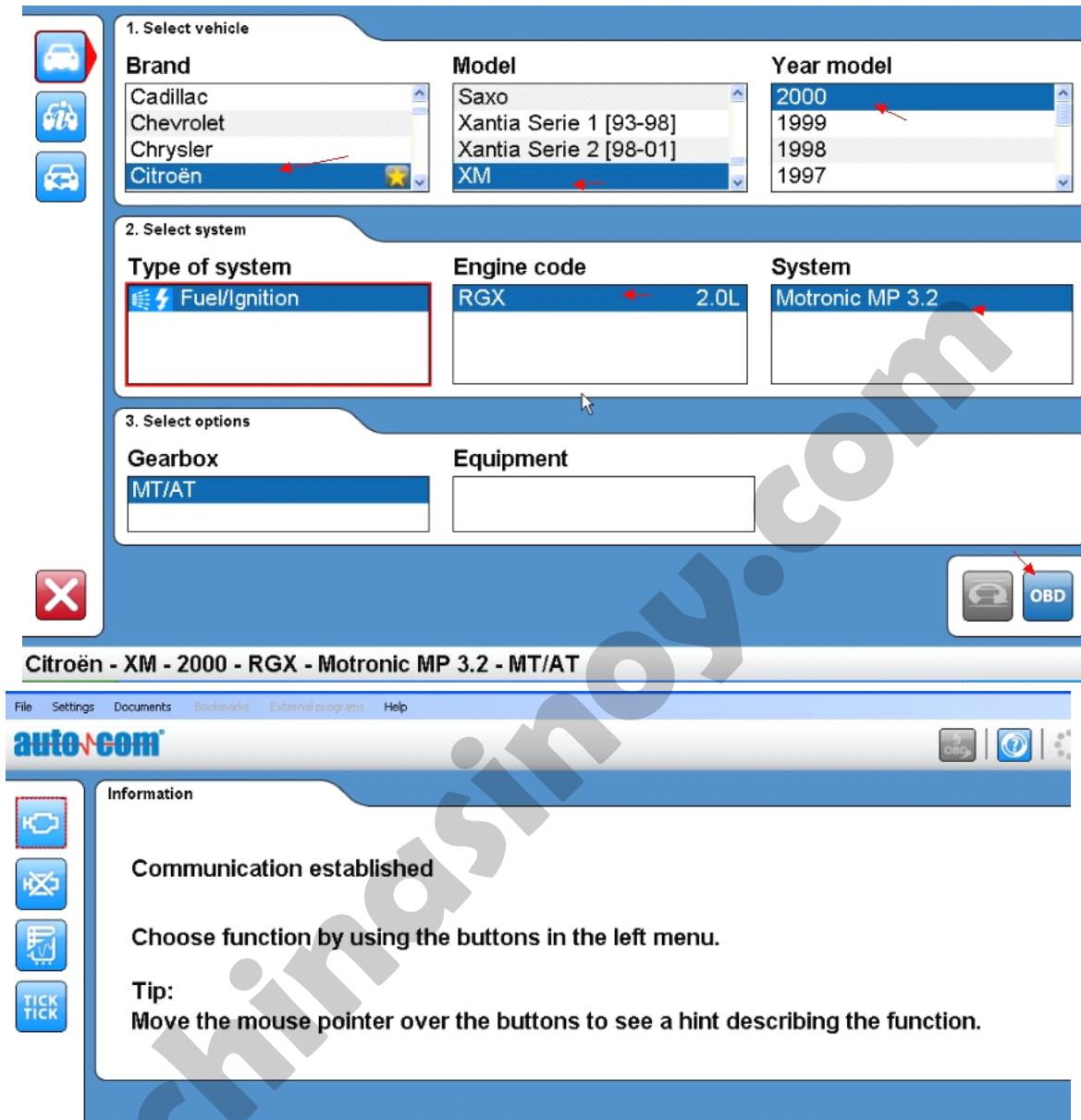
3, connect car with hardware, start to test communication



4, Choose VCP com-port, test ok!



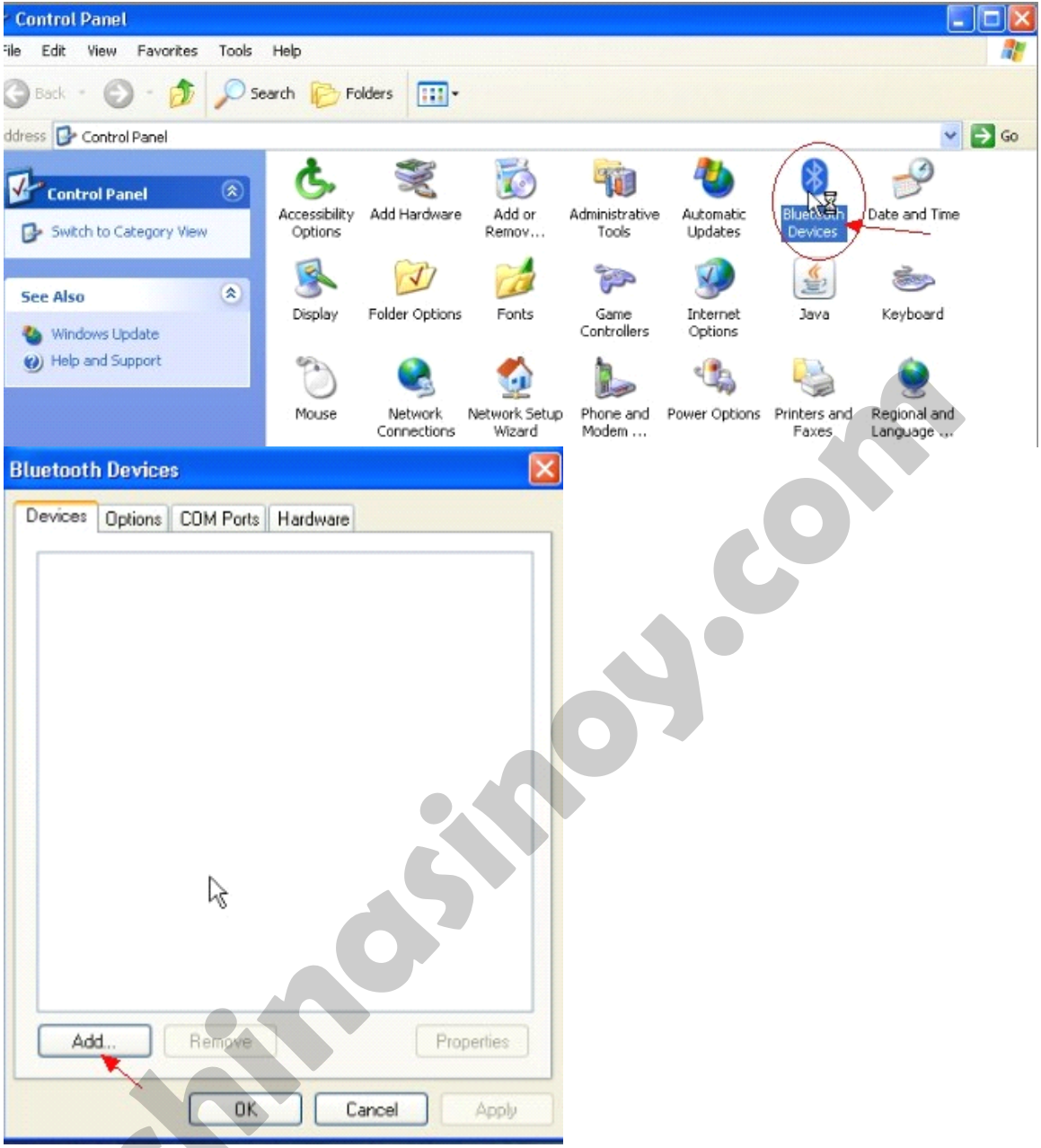
5, Select the car model you want to test.

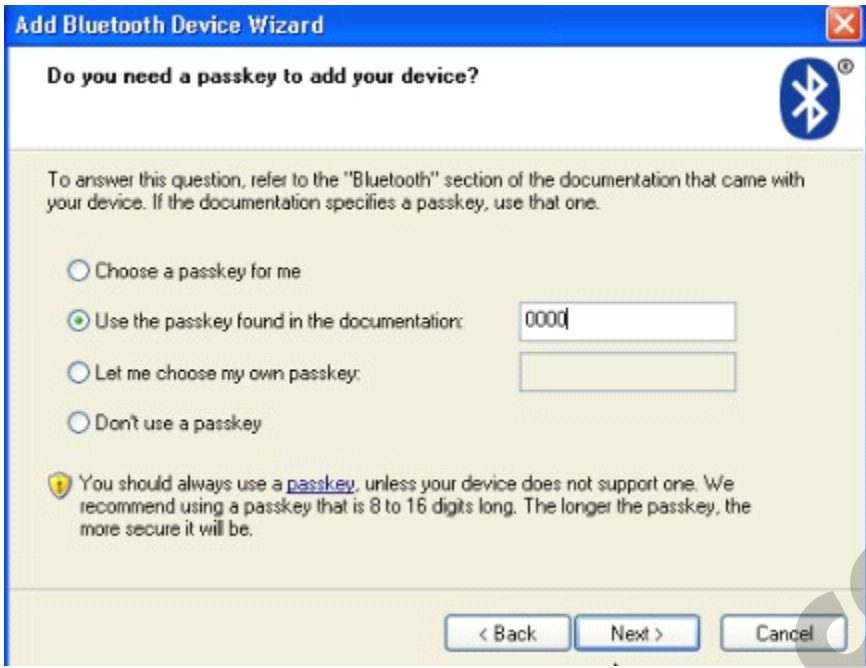


The screenshot displays the SINOY Electron software interface with the following sections:

- 1. Select vehicle:** Three dropdown menus for Brand (Citröen), Model (XM), and Year model (2000).
- 2. Select system:** Three dropdown menus for Type of system (Fuel/Ignition), Engine code (RGX 2.0L), and System (Motronic MP 3.2).
- 3. Select options:** Two dropdown menus for Gearbox (MT/AT) and Equipment.
- OB2:** A button labeled 'OB2' with a car icon.
- Summary:** A bar displaying 'Citröen - XM - 2000 - RGX - Motronic MP 3.2 - MT/AT'.
- Windows:** A menu bar with 'File', 'Settings', 'Documents', 'Bookmarks', 'External programs', and 'Help'. Below it is the 'auto-com' logo.
- Information Panel:** A sidebar with icons for engine, communication, and a 'TICK TICK' button. The main text reads: 'Communication established. Choose function by using the buttons in the left menu. Tip: Move the mouse pointer over the buttons to see a hint describing the function.'

6, Set Bluetooth, the password for Bluetooth is 0000





chinasinoy.com