

# XPROG-m Errata Sheet 001

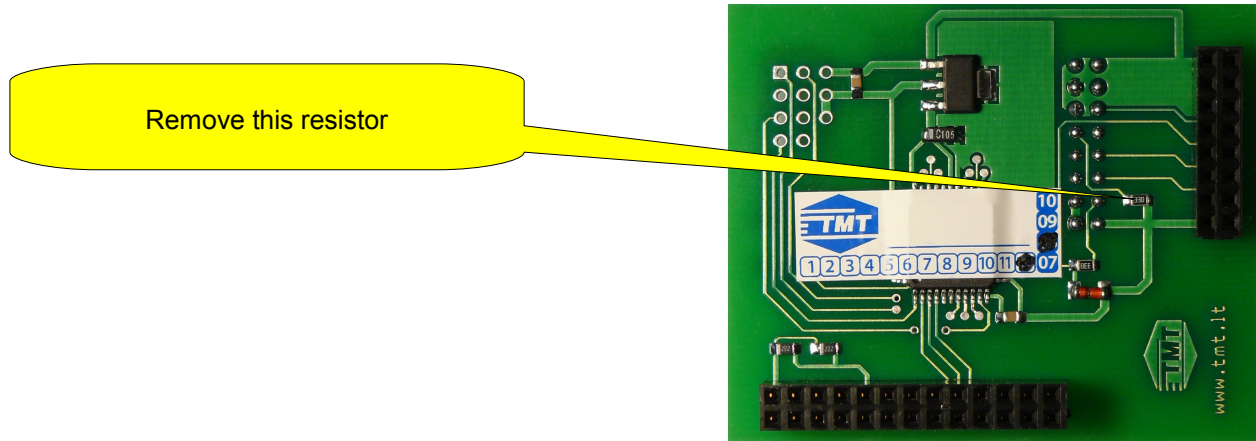
## INTRODUCTION

This errata provides information applicable to the following products:

- 1-002-0017 programming adapter Rev.B or earlier

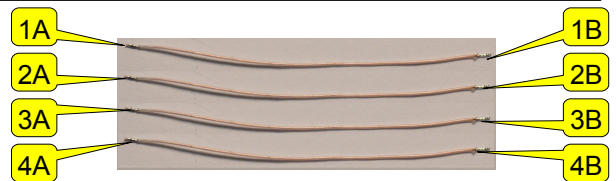
These changes allow you to work with secured ARM MCU via JTAG interface

## STEP1



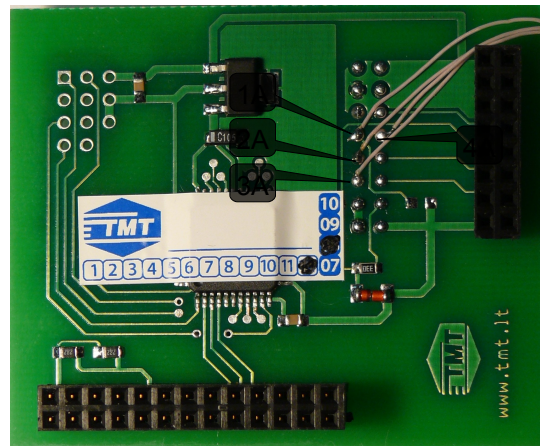
## STEP2

- Prepare the four wires. About 5cm in length.



## STEP3

- Solder wire shown in the corresponding points at the bottom side



## STEP4

- Solder wire shown in the corresponding points at the top side

